

2016

Omunis

*We make it **accessible***



PUMA LEPTO Kit
PCR. Universal. Molecular. Access.

Cap Alpha – 9 Avenue de l'Europe – 34830 Clapiers, France
Tel : +33 (0)4.34.35.91.18 – www.omunis.com – Email : contact@omunis.com



PUMA LEPTO Kit

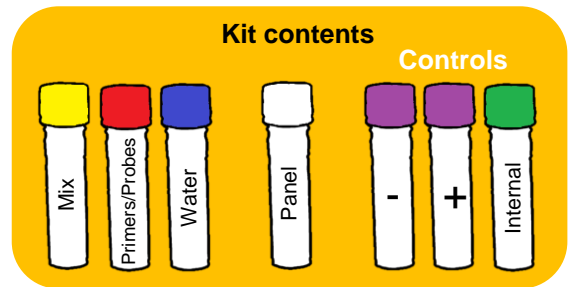
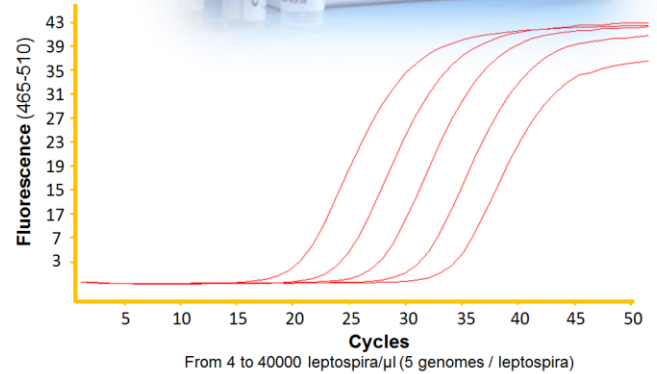
OPEN system

Technical validations

Compared to the reference technique*

* in-house PCR, contact us for more details

	OMUNIS	Reference technique
Repeatability	0.31 - 0.51%	Not done
Reproducibility	0.57 - 1.11%	Not done
LOD	0.5 GE / μ l	20 GE / μ l
Linearity	$R^2 = 0,9932$ (5log)	Not done
Serum volume	200 μ l	200 μ l

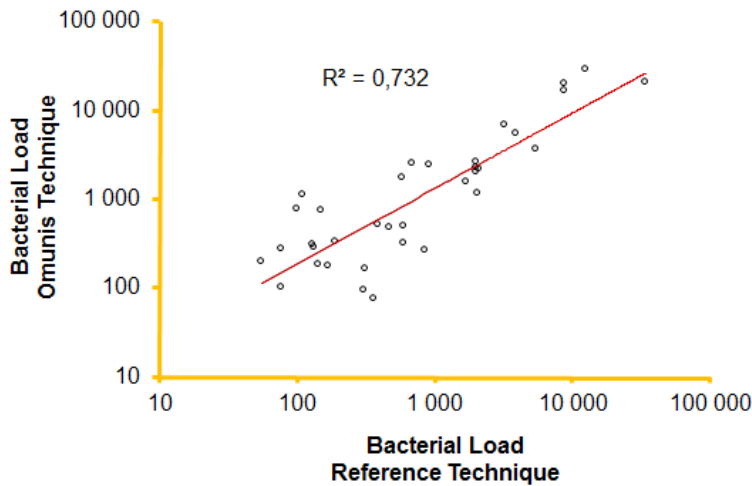


Clinical validations

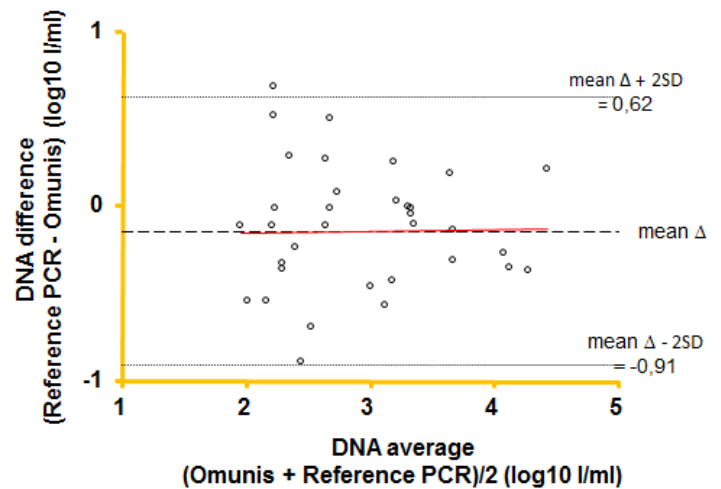
Compared to the reference technique*

* in-house PCR, contact us for more details

Bacterial load correlation Omunis vs Reference technique



Bland & Altman Omunis vs Reference technique



Specificity: 100%
On 36 clinical samples

Sensitivity: 100%
On 36 clinical samples